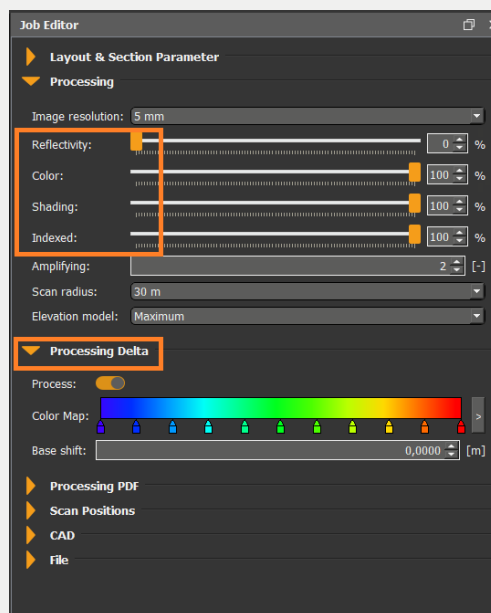
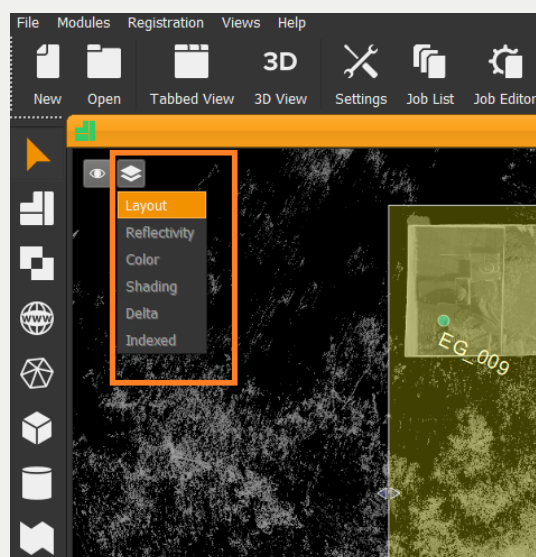


Sheets for layouts and sections

For the 2D plans, their orthophotos can be created with reflectivity, color, shading, (delta) deviation and indexed color:



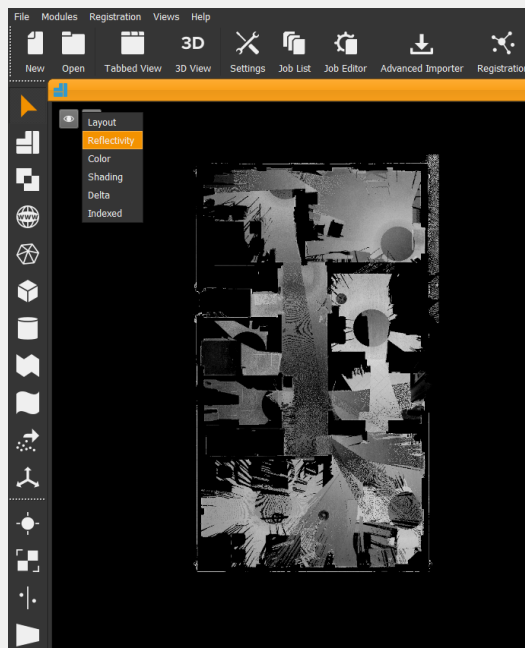
These orthophotos are placed on the following sheets when they are created with the appropriate options:



If no option is selected when creating an orthophoto, the points in the orthophoto will be colored with gray values according to the point density.

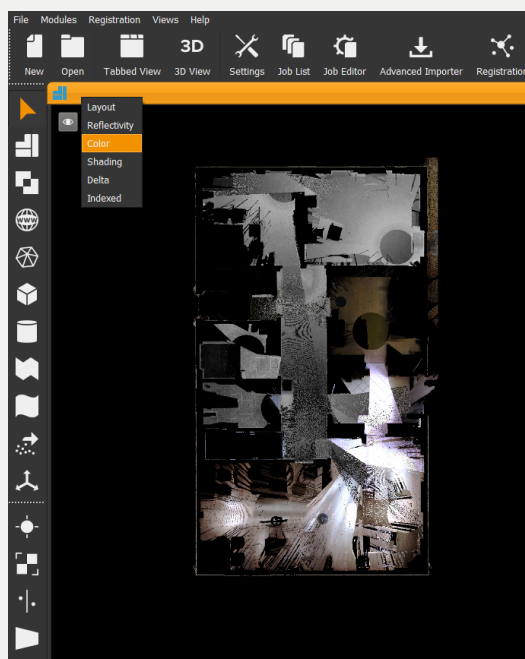
Reflectivity

The reflectivity is taken from the original point clouds when creating the orthophoto. The points in the orthophoto have the original reflectivities:



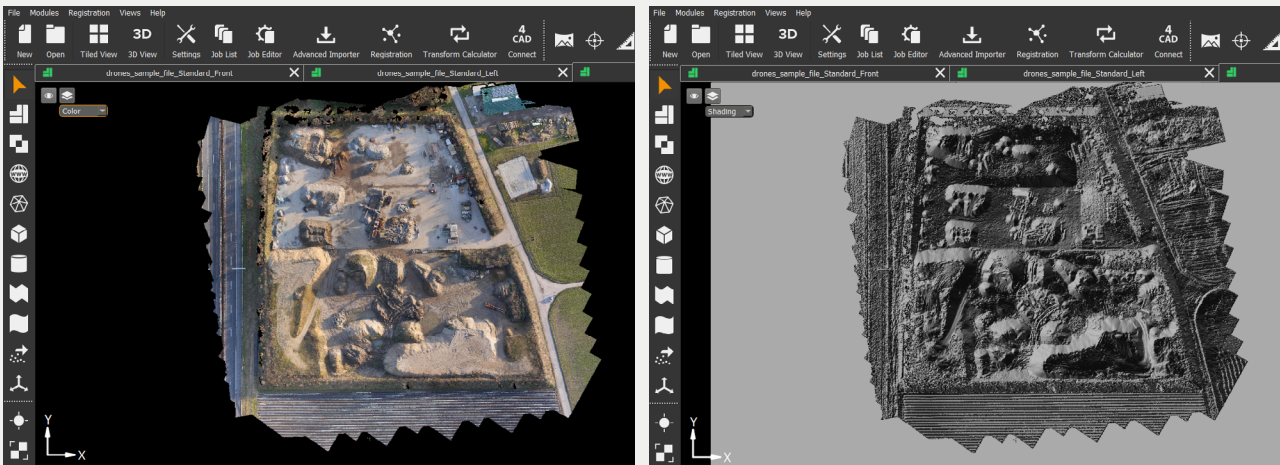
Color

With option „Color“ the orthophoto is created with the original point cloud colors:



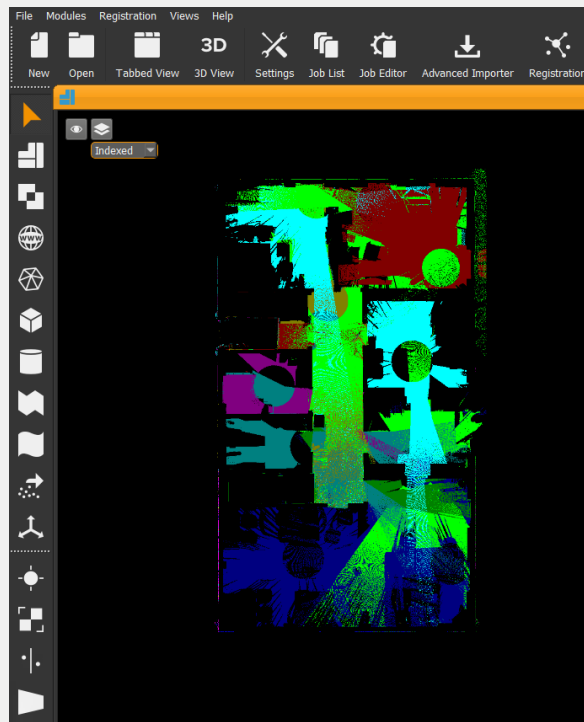
Shading

This option is often used to emphasize the surface change of an object (Left: Color, Right: Shading):



Indexed

If the point clouds have the scan positions, the points in the orthophoto can be colored according to the scan positions:



Delta

This option is often used to display the flatness of a plane (e.g. floor, ceiling, facade, etc.). The deviations between the point clouds and the reference plane are colored according to the selected step size:

