

## SPACE WARP Results and Documentation

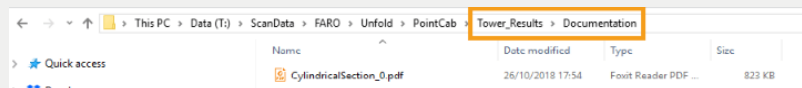
The following results are produced by PointCab when calculating the SpaceWarp functions:

1. PDF Protocol if PDF export was checked.
2. Orthophoto in CAD format (DWG, DXF or DAE).

We will now take a closer look at the results. A cylindrical section serves as an example.

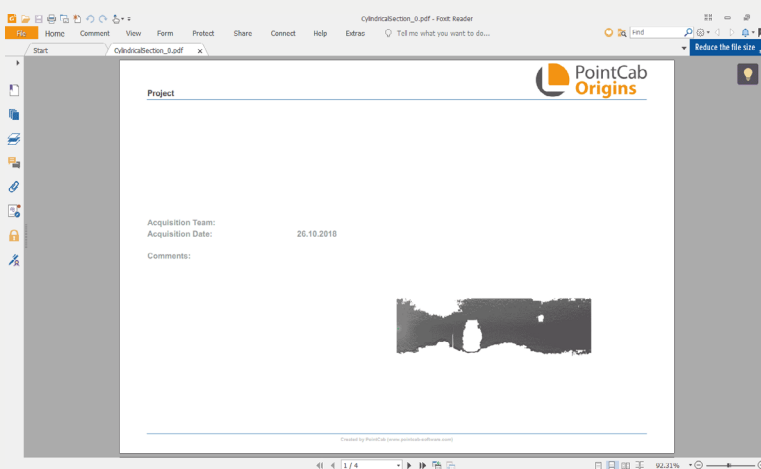
### 1. PDF Protocol

The PDF protocol is created in the **Project\_Results** directory in the Documentation folder:

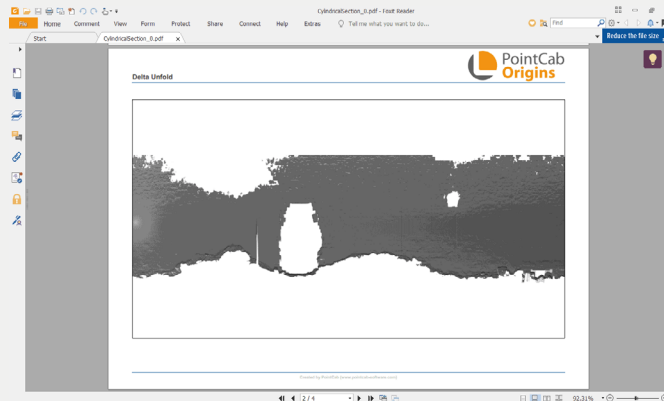


The following contents are documented in the PDF protocol:

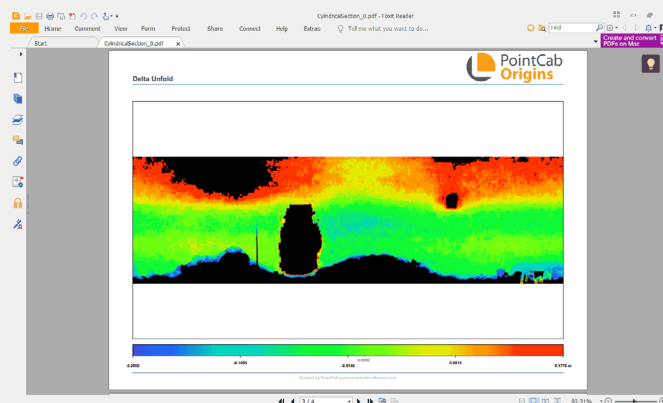
- a) Cover sheet with project name, recording period and your comments:



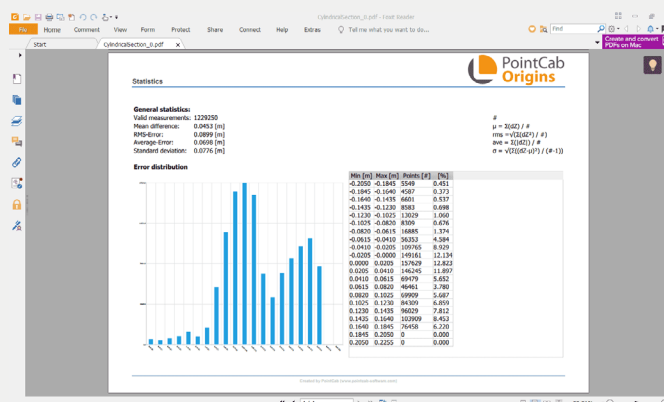
b) Unfolded orthophoto



c) Deviations to the lateral surface of the cylinder in dependence of the viewing direction

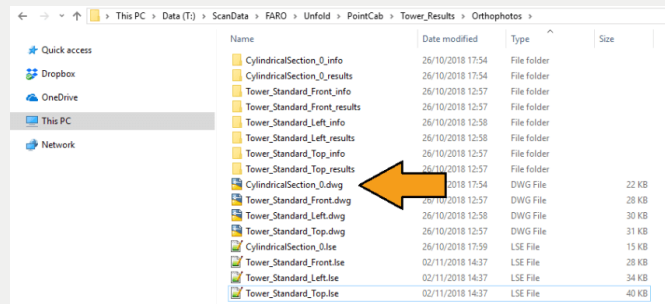


d) Statistical evaluation of the deviations from the projection surface with a histogram



## 2. Orthophoto in CAD format (using DWG as an example)

The orthophotos of the SpaceWarp functions are located in the **Project\_Results** directory in the Orthophotos folder.



The DWG file can now be imported into the CAD application and evaluated further depending on the task.

