

# PointCab TUTORIALS


## MESH

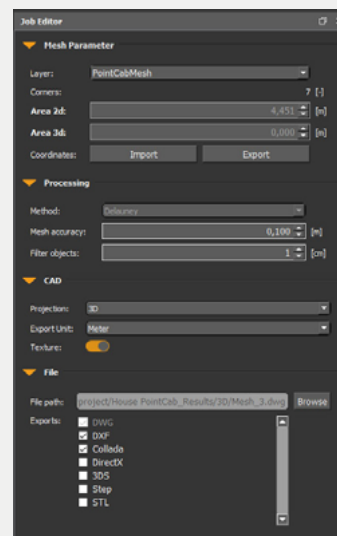
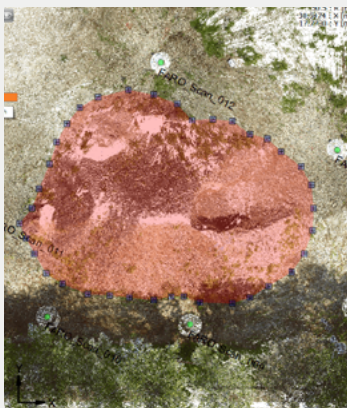
The mesh tool in PointCab is not a full 3D mesh, but a **2.5D mesh**. Since our software does not work directly in the 3D point cloud, but in the 2D views with depth information (i.e. 2.5D views), it is only logical that the meshes created on the basis of these views are also 2.5D representations of the point cloud.

In other words, this means that the meshes are „empty“ inside, so to speak, and that Pointcab does not calculate the „closing“ part of the mesh.

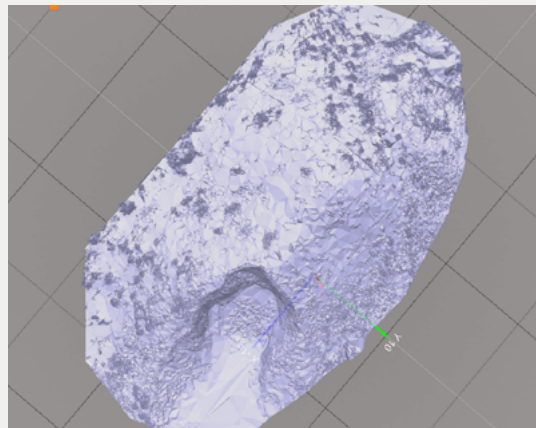
The PointCab mesh is best suited for mesh creation of fills and pits. In the following tutorial we will show you how to create the mesh for a fill.

### Surface model of a fill

To create the mesh of a fill, we activate the **mesh tool** . We simply select the area we want to evaluate and finish the selection by clicking on the starting point again. Now we can adjust the parameters in the **Job Editor**.



After the calculation we can look at our result in the **3D view 3D**. To do this, we can open the file with a *double click* on the job or via the context menu (*right-click*). In the 3D view we now have the possibility to observe the surface more closely.



For further analysis we can open the mesh in a CAD software. Via the context menu we can display the result in the folder. Here is our example opened in Autodesk TrueView:

