
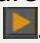


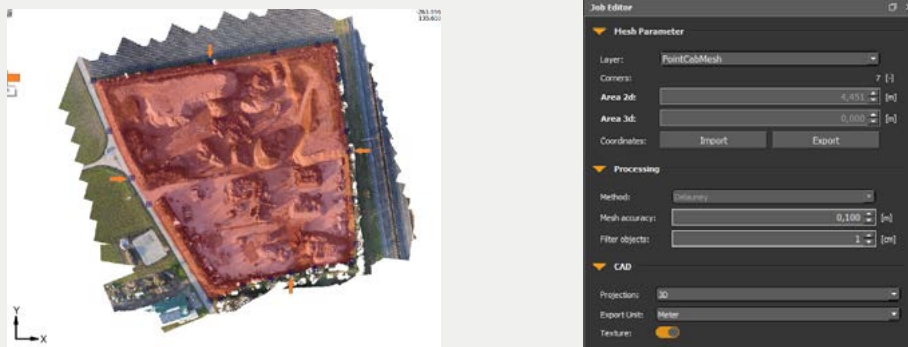
PointCab TUTORIALS

MESH

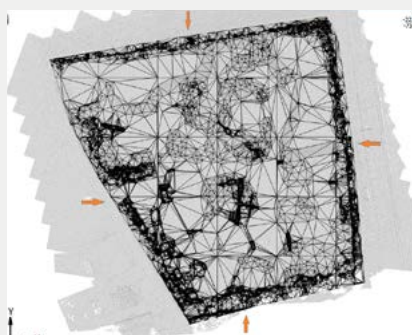
With the **PointCab Mesh Tool**  you can create digital terrain models of the whole point cloud. In the following example we use our drone sample data, which you can find in the sample data section on our website, to create the digital terrain model of a landfill.

Digital terrain model

First we activate our mesh tool and select the area for the DTM. We start the calculation with the Start button. .



The mesh is displayed directly in the orthophoto after completion.



... and this is how the mesh looks in the PointCab 3D view and in Autodesk TrueView.

